

EST October 2025

Math Questions

Eng. Mohamed El-minshawy

#MinshawyMath WhatsApp: +201144304897

1) How many seconds are in 3.5 Hours?

5) 22% of x equals 77, find x?

2) An angle is one third of its complementary, Find the angle ?

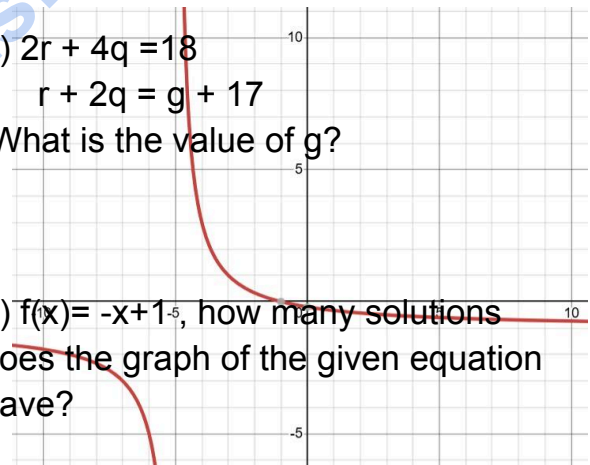
6) $2r + 4q = 18$
 $r + 2q = g + 17$
What is the value of g?

3) $2^y \cdot (9^{x-3})^{\frac{x}{2}}$ Find xy

7) $f(x) = -x + 1^{-5}$, how many solutions does the graph of the given equation have?

4) $4(m^2 + 2m + 1) = 16$
What is the value of m?

8) A smart Watch and a smart pen price equals 377, if the pen price equals 88 and the price if the watch was 15% off, what is the original price of the watch?



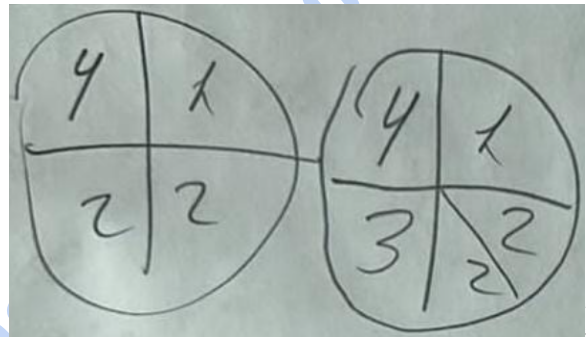
9) $2(3x) - 5x = 3$ what is the value of x ?

13) $\frac{(x+1)}{(x-1)}$ choose the graph?

10) $\frac{1}{\sqrt{x-1}}$ find the domain?

14) What is the probability of spinning both spinners and getting a sum of an odd number greater than 3?

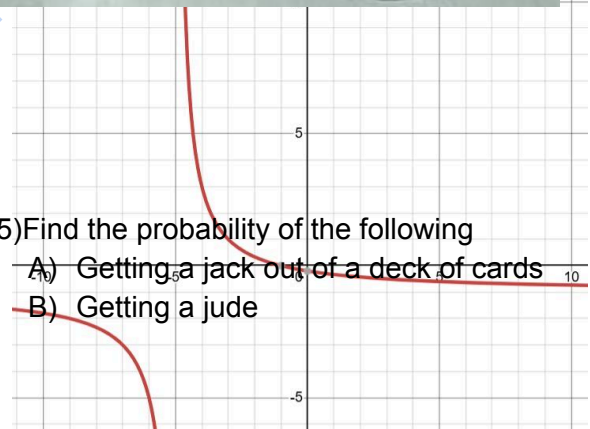
11) Sum of first five positive numbers?



12) How many words can you make by using the letters of the word CHEESE ?

15) Find the probability of the following

- A) Getting a jack out of a deck of cards
- B) Getting a jude

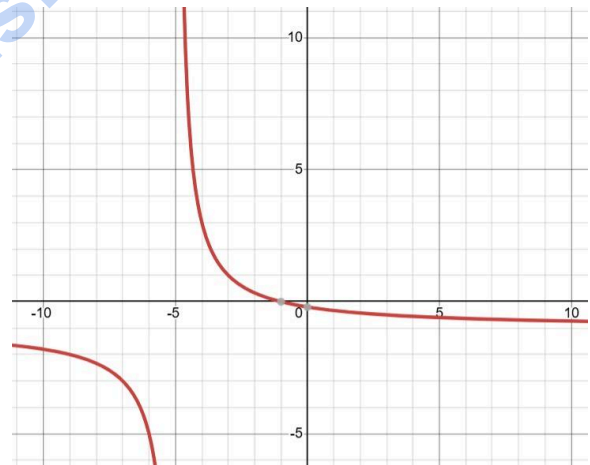


16) A Square has a perimeter of 20 ,
if each side is increased by 2%
,What will happen to the square?

- a)Area increases by 4%
- b)Area increases by 2%
- c)Perimeter increases by 2%
- d)Perimeter Increases by 4%

19) {3, 4, 5, 6, 6, 6, 6, 7, 8, 9, 9, 9, 10,}
Find the upper quartile?

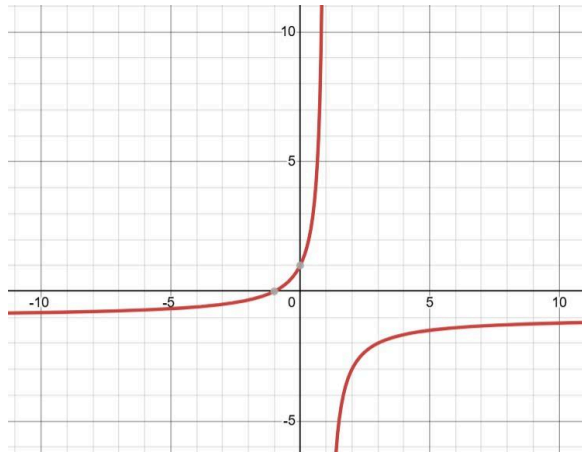
17) $f(x) = 2^{2x-3}$, if x approaches
 $-\infty$, what does y approach?



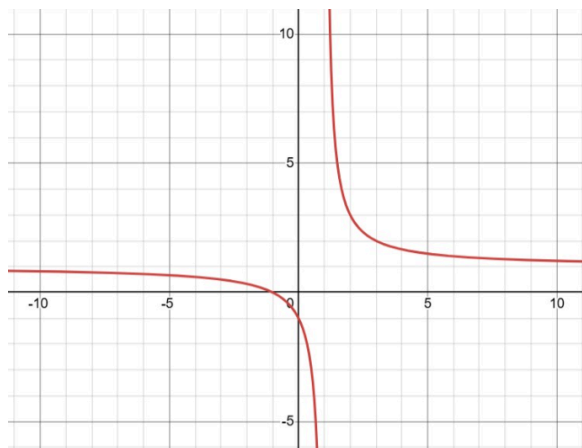
18) $|3x - 7| < 9$,Find the value of
x ?

20) $\frac{x+1}{x-1}$ Find the correct graph?

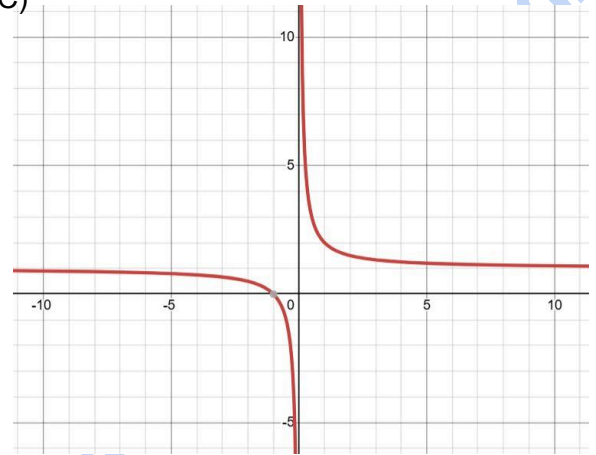
a)



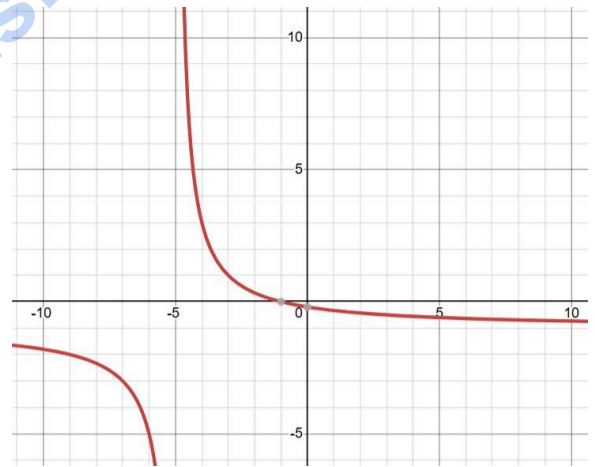
b)



c)



d)



24897

Eng. Mohamed Elminshawy